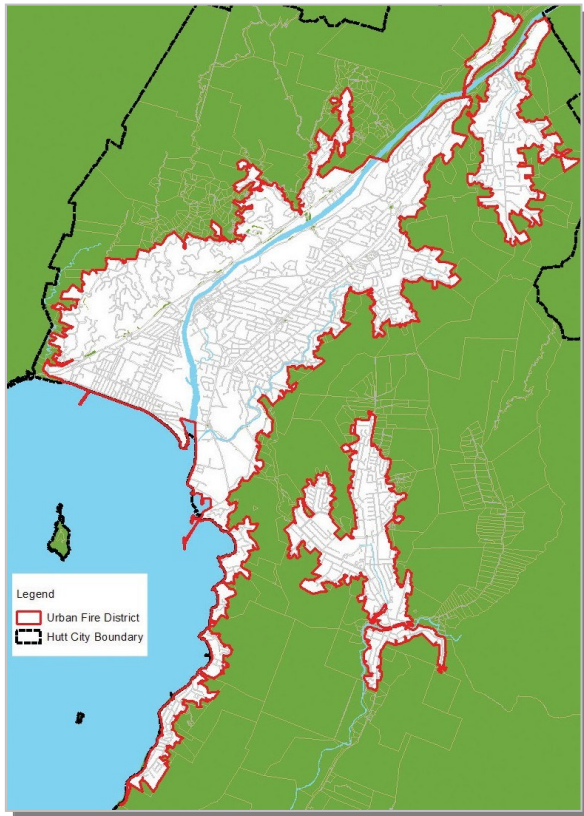


URBAN FIRE DISTRICT MAP



THE FIRE PREVENTION BYLAW



A copy of the bylaw can be downloaded from the Hutt City Council website: huttcity.govt.nz/bylaws

FOR FURTHER INFORMATION

Environmental Health

Hutt City Council, 531 High Street, Lower Hutt

T: 04 570 6666

F: 04 569 4290

E: contact@huttcity.govt.nz

RSE-INFO-030 | DOC/14/186037 | July 2015

HUTT CITY
TE AWA KAIRANGI

The HCC Fire Prevention Bylaw limits the lighting of open-air fires in the urban fire district.

It does not apply to rural areas of the city.

The bylaw aims to stop the burning of vegetation and other combustible materials that are a nuisance or will pollute the environment.

The bylaw became effective from 1 August 2008.

FREQUENTLY ASKED QUESTIONS

CAN I USE MY INCINERATOR?

Any burning in an incinerator is prohibited.

DOES THE BYLAW INCLUDE HANGI, UMU, BARBECUES AND OTHER OUTDOOR COOKING?

Fires may be lit for hangi, umu, barbecues, braziers, outdoor cooking ovens or as part of a traditional cooking process as long as the fire is adequately supervised at all times.

DOES VEGETATION INCLUDE CUT, DEAD MATERIAL?

It includes all plant material and debris, whether green or dead, standing, cut, sawn, fallen, windblown, broken, harvested, stubble or stumps.

WHERE CAN I DISPOSE OF MY GARDEN WASTE?

For small amounts of green waste you could start a compost bin, or for tree pruning, hire or buy a mulching machine to create mulch for your garden. Larger amounts of vegetation and other material can be taken to:

- Silverstream Landfill, Reynolds Bach Drive, Silverstream
- Seaview Recycle and Transfer Station, 27 Seaview Road, Seaview

Charges apply according to the size of the load. You might also employ a tree or garden services contractor, or hire a waste bin.

ARE CAMP FIRES ALLOWED?

Anyone can apply to council for a permit or special exemption. Council will grant a permit under special

conditions and usually for one-off events such as cultural celebrations, Scout and Guide camp fires, filming or fire training exercises.

WHAT ARE THE BOUNDARIES OF THE URBAN FIRE DISTRICT?

The area covered by the Urban Fire District includes the main residential areas of the City (see map overleaf).

For more detailed information, please contact Hutt City Council on 04 570 6666.

WHERE CAN I GET A RURAL FIRE PERMIT?

Rural fire permits are issued by a Rural Fire Officer and are subject to the provisions of the Forest and Rural Fires Act 1977.

Please contact Hutt City Council 04 570 6666 or email contact@huttcity.govt.nz

CAN WE LIGHT A FIRE ON THE BEACH OR BESIDE THE RIVER?

You can't light a fire (including fireworks) on a beach or in a reserve, other than a gas barbecue, without written permission from council.

The Greater Wellington Regional Council is responsible for the control of fires besides rivers within the district.

HOW CAN I FIND OUT IF THERE IS A TOTAL FIRE BAN?

Council may declare the start and finish of a prohibited fire season at any time. Notice and conditions of a prohibited fire season will be placed in newspapers, on the radio and on the council website.

